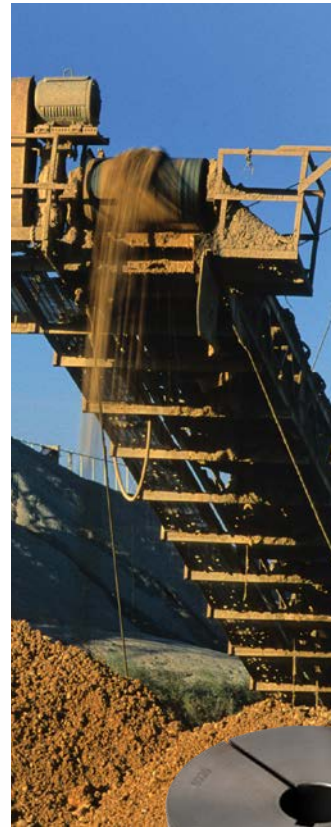


Taper-Lock™ Bushings



 **TB Wood's**®
Altra Industrial Motion



DISTRIBUIDOR MEX (55) 53 63 23 31 MTY (81) 83 54 10 18
AUTORIZADO QRO (442) 1 95 72 60 ventas@industrialmagza.com

TB Wood's

TB Wood's is an industry leading designer and manufacturer of mechanical power transmission equipment for industrial control. Our mechanical product lines include: clutch and brake, synchronous and belted variable speed drives; grid, disc, jaw, gear coupling and elastomeric coupling products; sheaves and bushings. Registered trademarks include Sure-Flex Plus®, Dura-Flex®, G-Flex®, and Sure-Grip®.

TB Wood's was founded in 1857 and began as a foundry producing wood burning stoves. Our company's tradition of product innovation started early. TB Wood's entered the power transmission industry at the turn of the century with the introduction of flat belted drives and line shafting.

VISIT US ON THE WEB AT
TBWOODS.COM



Altra Industrial Motion

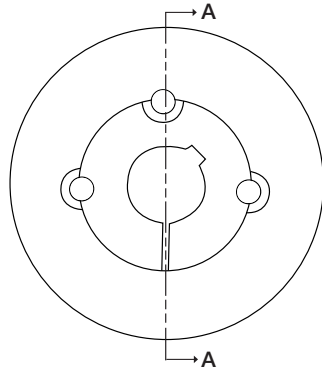
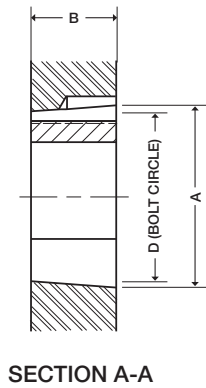
Altra is a leading global designer and manufacturer of quality power transmission and motion control products utilized on a wide variety of industrial drivetrain applications. Altra clutches and brakes, couplings, gearing and PT component product lines are marketed under the industries most well known manufacturing brands. Each brand is committed to the guiding principles of operational excellence, continuous improvement and customer satisfaction. Highly-engineered Altra solutions are sold in over 70 countries and utilized in a variety of major industrial markets, including food processing, material handling, packaging machinery, mining, energy, automotive, primary metals, turf and garden and many others.

Altra's leading brands include **Ameridrives**, **Bauer** Gear Motor, **Bibby** Turboflex, **Boston** Gear, **Delroyd** Worm Gear, **Formsprag** Clutch, **Guardian** Couplings, **Huco**, **Industrial** Clutch, **Inertia** Dynamics, **Kilian**, **Lamiflex** Couplings, **Marland** Clutch, **Matrix**, **Nuttall** Gear, **Stieber**, **Stromag**, **Svendborg** Brakes, **TB Wood's**, **Twiflex**, **Warner** Electric, **Warner** Linear and **Wichita** Clutch.

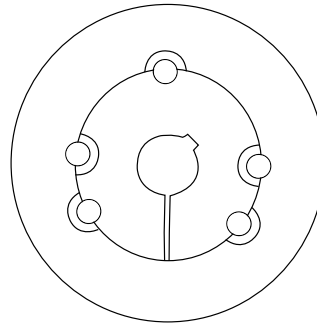
VISIT US ON THE WEB AT **ALTRAMOTION.COM**



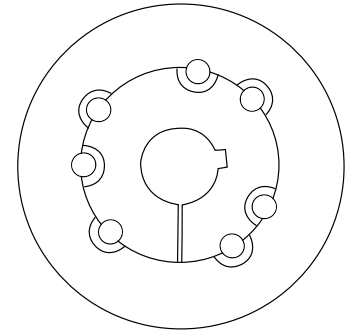
Dimensions & Rating Table



1008 - 3030



3535 - 6050



7060

Taper-Lock Bushings

Bushing Size	Torque Capacity (lb-in)	Bore Range (in)			Dimensions		Bolt Circle (in)	Mounting Screws	
		Min. Bore	Max Bore*		A	B		Qty.	Size
			Standard Keyseat	Shallow Keyseat					
1008	1,200	0.500	0.875	1.000	1.382	0.875	1.328	2	1/4x1/2
1108	1,300	0.500	1.000	1.125	1.507	0.875	1.453	2	1/4x1/2
1210	3,600	0.500	1.250	—	1.874	1.000	1.750	2	3/8x5/8
1215	3550	0.500	1.250	—	1.874	1.500	1.750	2	3/8x5/8
1310	3850	0.500	1.375	1.438	2.000	1.000	1.875	2	3/8x5/8
1610	4,300	0.500	1.500	1.688	2.249	1.000	2.125	2	3/8x5/8
1615	4,300	0.500	1.500	1.688	2.249	1.500	2.125	2	3/8x5/8
2012	7,150	0.500	1.875	2.125	2.749	1.250	2.625	2	7/16x7/8
2517	11,600	0.500	2.250	2.688	3.374	1.750	3.250	2	1/2x1
2525	11300	0.750	2.250	2.500	3.374	2.500	3.250	2	1/2x1
3020	24,000	0.875	2.750	3.250	4.249	2.000	4.000	2	5/8x1-1/4
3030	24,000	0.938	2.750	3.250	4.249	3.000	4.000	2	5/8x1-1/4
3525	44,800	1.188	3.250	3.938	4.996	2.500	4.830	3	1/2x1-1/2
3535	44,800	1.188	3.250	3.938	4.996	3.500	4.830	3	1/2x1-1/2
4030	77,300	1.438	3.625	4.438	5.746	3.000	5.540	3	5/8x1-3/4
4040	77,300	1.438	3.625	4.438	5.746	4.000	5.540	3	5/8x1-3/4
4535	110,000	1.938	4.250	4.938	6.371	3.500	6.130	3	3/4x2
4545	110,000	1.938	4.250	4.938	6.371	4.500	6.130	3	3/4x2
5040	126,000	2.438	4.500	5.000	6.996	4.000	6.720	3	7/8x2-1/4
5050	126,000	2.438	4.500	5.000	6.996	5.000	6.720	3	7/8x2-1/4
6050	282,000	3.000	6.000	—	9.244	5.000	9.000	3	1-1/4x3-1/2
7060	416,000	3.000	7.000	—	10.244	6.000	10.000	4	1-1/4x3-1/2

*Key is furnished with each bushing having a shallow keyseat.

TAPER-LOCK™ BUSHINGS

Bushing Bore & Keyway Information

Inch Bores

Part Number	Bore	Keyseat	Weight
TL1008 BUSHINGS			
TL100812	1/2	1/8 x 1/16	0.3
TL10089/16	9/16	1/8 x 1/16	0.3
TL100858	5/8	3/16 x 3/32	0.2
TL10081116	11/16	3/16 x 3/32	0.2
TL100834	3/4	3/16 x 3/32	0.2
TL10081316	13/16	3/16 x 3/32	0.2
TL100878	7/8	3/16 x 3/32	0.2
TL10081516	15/16	1/4 x 1/16	0.2
TL10081	1	1/4 x 1/16	0.2
TL1108 BUSHINGS			
TL110812	1/2	1/8 x 1/16	0.5
TL1108916	9/16	1/8 x 1/16	0.3
TL1108916	9/16	1/8 x 1/16	0.3
TL110858	5/8	3/16 x 3/32	0.5
TL11081116	11/16	3/16 x 3/32	0.3
TL110834	3/4	3/16 x 3/32	0.5
TL11081316	13/16	3/16 x 3/32	0.3
TL110878	7/8	3/16 x 3/32	0.5
TL11081516	15/16	1/4 x 1/8	0.2
TL11081	1	1/4 x 1/8	0.5
TL11081116	1-1/16	1/4 x 1/16	0.2
TL1108118	1-1/8	1/4 x 1/16	0.5
TL1210 BUSHINGS			
TL121012	1/2	1/8 x 1/16	0.6
TL12109/16	9/16	1/8 x 1/16	0.6
TL121058	5/8	3/16 x 3/32	0.6
TL121011/16	11/16	3/16 x 3/32	0.6
TL121034	3/4	3/16 x 3/32	0.6
TL121013/16	13/16	3/16 x 3/32	0.6
TL121078	7/8	3/16 x 3/32	0.6
TL121015/16	15/16	1/4 x 1/8	0.5
TL12101	1	1/4 x 1/8	0.5
TL12101116	1-1/16	1/4 x 1/8	0.5
TL1210118	1-1/8	1/4 x 1/8	0.5
TL12101316	1-3/16	1/4 x 1/8	0.5
TL1210114	1-1/4	1/4 x 1/8	0.5
TL1215 BUSHINGS			
TL121512	1/2	1/8 x 1/16	0.8
TL12159/16	9/16	1/8 x 1/16	0.8
TL121558	5/8	3/16 x 3/32	0.7
TL121511/16	11/16	3/16 x 3/32	0.7
TL121534	3/4	3/16 x 3/32	0.7
TL121513/16	13/16	3/16 x 3/32	0.7
TL121578	7/8	3/16 x 3/32	0.8
TL121515/16	15/16	1/4 x 1/8	0.6
TL12151	1	1/4 x 1/8	0.6
TL12151116	1-1/16	1/4 x 1/8	0.6
TL1215118	1-1/8	1/4 x 1/8	0.6
TL12151316	1-3/16	1/4 x 1/8	0.6
TL1215114	1-1/4	1/4 x 1/8	0.6

Part Number	Bore	Keyseat	Weight
TL1310 BUSHINGS			
TL131012	1/2	1/8 x 1/16	0.7
TL13109/16	9/16	1/8 x 1/16	0.7
TL131058	5/8	3/16 x 3/32	0.7
TL131011/16	11/16	3/16 x 3/32	0.7
TL131034	3/4	3/16 x 3/32	0.6
TL131013/16	13/16	3/16 x 3/32	0.6
TL131078	7/8	3/16 x 3/32	0.6
TL131015/16	15/16	1/4 x 1/8	0.6
TL13101	1	1/4 x 1/8	0.6
TL13101116	1-1/16	1/4 x 1/8	0.5
TL1310118	1-1/8	1/4 x 1/8	0.5
TL13101316	1-3/16	1/4 x 1/8	0.5
TL1310114	1-1/4	1/4 x 1/8	0.4
TL13101516	1-5/16	5/16 x 5/32	0.4
TL1310138	1-3/8	5/16 x 5/32	0.4
TL13101716	1-7/16	3/8 x 1/8	0.4
TL1610 BUSHINGS			
TL161012	1/2	1/8 x 1/16	0.9
TL16109/16	9/16	1/8 x 1/16	0.9
TL161058	5/8	3/16 x 3/32	0.8
TL161011/16	11/16	3/16 x 3/32	0.8
TL161034	3/4	3/16 x 3/32	0.8
TL161013/16	13/16	3/16 x 3/32	0.8
TL161078	7/8	3/16 x 3/32	0.8
TL161015/16	15/16	1/4 x 1/8	0.7
TL16101	1	1/4 x 1/8	0.7
TL16101116	1-1/16	1/4 x 1/8	0.7
TL1610118	1-1/8	1/4 x 1/8	0.7
TL16101316	1-3/16	1/4 x 1/8	0.7
TL1610114	1-1/4	1/4 x 1/8	0.7
TL16101516	1-5/16	5/16 x 5/32	0.7
TL1610138	1-3/8	5/16 x 5/32	0.7
TL16101716	1-7/16	3/8 x 3/16	0.6
TL1610112	1-1/2	3/8 x 3/16	0.6
TL16101916	1-9/16	3/8 x 1/8	0.5
TL1610158	1-5/8	3/8 x 1/8	0.5
TL161011116	1-11/16	3/8 x 1/8	0.5
TL1615 BUSHINGS			
TL161512	1/2	1/8 x 1/16	1.2
TL16159/16	9/16	1/8 x 1/16	1.3
TL161558	5/8	3/16 x 3/32	1.1
TL161511/16	11/16	3/16 x 3/32	1.1
TL161534	3/4	3/16 x 3/32	1.1
TL161513/16	13/16	3/16 x 3/32	1.2
TL161578	7/8	3/16 x 3/32	1.1
TL161515/16	15/16	1/4 x 1/8	1.0
TL16151	1	1/4 x 1/8	1.0
TL16151116	1-1/16	1/4 x 1/8	1.0
TL1615118	1-1/8	1/4 x 1/8	1.0
TL16151316	1-3/16	1/4 x 1/8	1.0
TL1615114	1-1/4	1/4 x 1/8	1.0
TL16151516	1-5/16	5/16 x 5/32	0.8
TL1615138	1-3/8	5/16 x 5/32	0.8
TL16151716	1-7/16	3/8 x 3/16	0.7
TL1615112	1-1/2	3/8 x 3/16	0.7
TL16151619	1-9/16	3/8 x 1/8	0.7
TL1615158	1-5/8	3/8 x 1/8	0.6
TL161511116	1-11/16	3/8 x 1/8	0.5



Bushing Bore & Keyway Information

Inch Bores

Part Number	Bore	Keyseat	Weight
TL2012 BUSHINGS			
TL201212	1/2	1/8 x 1/16	1.7
TL20129/16	9/16	1/8 x 1/16	1.7
TL201258	5/8	3/16 x 3/32	1.6
TL201211/16	11/16	3/16 x 3/32	1.6
TL201234	3/4	3/16 x 3/32	1.6
TL201213/16	13/16	3/16 x 3/32	1.6
TL201278	7/8	3/16 x 3/32	1.6
TL201215/16	15/16	1/4 x 1/8	1.5
TL20121	1	1/4 x 1/8	1.5
TL20121116	1-1/16	1/4 x 1/8	1.4
TL2012118	1-1/8	1/4 x 1/8	1.5
TL20121316	1-3/16	1/4 x 1/8	1.5
TL2012114	1-1/4	1/4 x 1/8	1.5
TL20121516	1-5/16	5/16 x 5/32	1.4
TL2012138	1-3/8	5/16 x 5/32	1.4
TL20121716	1-7/16	3/8 x 3/16	1.2
TL2012112	1-1/2	3/8 x 3/16	1.2
TL20121916	1-9/16	3/8 x 3/16	1.2
TL2012158	1-5/8	3/8 x 3/16	1.2
TL201211116	1-11/16	3/8 x 3/16	1.2
TL2012134	1-3/4	3/8 x 3/16	1.2
TL201211316	1-13/16	1/2 x 1/4	1.0
TL2012178	1-7/8	1/2 x 1/4	1.0
TL201211516	1-15/16	1/2 x 3/16	1.0
TL2012122	2	1/2 x 3/16	1.0
TL2012218	2-1/8	1/2 x 3/16	0.8
TL2517 BUSHINGS			
TL251712	1/2	1/8 x 1/16	2.0
TL25179/16	9/16	1/8 x 1/16	3.4
TL251758	5/8	3/16 x 3/32	3.4
TL251711/16	11/16	3/16 x 3/32	3.4
TL251734	3/4	3/16 x 3/32	3.3
TL251713/16	13/16	3/16 x 3/32	3.3
TL251778	7/8	3/16 x 3/32	2.0
TL251715/16	15/16	1/4 x 1/8	3.3
TL25171	1	1/4 x 1/8	2.0
TL25171116	1-1/16	1/4 x 1/8	3.2
TL2517118	1-1/8	1/4 x 1/8	3.1
TL25171316	1-3/16	1/4 x 1/8	2.0
TL2517114	1-1/4	1/4 x 1/8	2.0
TL25171516	1-5/16	5/16 x 5/32	2.9
TL2517138	1-3/8	5/16 x 5/32	2.0
TL25171716	1-7/16	3/8 x 3/16	2.0
TL2517112	1-1/2	3/8 x 3/16	2.0
TL25171916	1-9/16	3/8 x 3/16	2.7
TL2517158	1-5/8	3/8 x 3/16	2.0
TL251711116	1-11/16	3/8 x 3/16	2.0
TL2517134	1-3/4	3/8 x 3/16	2.0
TL251711316	1-13/16	1/2 x 1/4	2.4
TL2517178	1-7/8	1/2 x 1/4	2.0
TL251711516	1-15/16	1/2 x 1/4	2.0
TL25172	2	1/2 x 1/4	2.0
TL25172116	2-1/16	1/2 x 1/4	2.3
TL2517218	2-1/8	1/2 x 1/4	2.0

Part Number	Bore	Keyseat	Weight
TL25172316	2-3/16	1/2 x 1/4	2
TL2517214	2-1/4	1/2 x 1/4	2
TL25172516	2-5/16	5/8 x 3/16	1.9
TL2517238	2-3/8	5/8 x 3/16	2
TL25172716	2-7/16	5/8 x 3/16	2
TL2517212	2-1/2	5/8 x 3/16	1.6
TL2517258	2-5/8	5/8 x 3/16	2
TL251721116	2-11/16	5/8 x 3/16	1.4
TL2525 BUSHINGS			
TL252534	3/4	3/16 x 3/32	4.9
TL252578	7/8	3/16 x 3/32	4.8
TL25251	1	1/4 x 1/8	4.7
TL2525118	1-1/8	1/4 x 1/8	4.6
TL25251316	1-3/16	1/4 x 1/8	4.5
TL2525114	1-1/4	1/4 x 1/8	4.4
TL2525138	1-3/8	5/16 x 5/32	4.2
TL25251716	1-7/16	3/8 x 3/16	4.2
TL2525112	1-1/2	3/8 x 3/16	4
TL2525158	1-5/8	3/8 x 3/16	3.9
TL252511116	1-11/16	3/8 x 3/16	3.8
TL2525134	1-3/4	3/8 x 3/16	3.7
TL252511316	1-13/16	1/2 x 1/4	3.5
TL2525178	1-7/8	1/2 x 1/4	3.4
TL252511516	1-15/16	1/2 x 1/4	3.3
TL25252	2	1/2 x 1/4	3.2
TL2525218	2-1/8	1/2 x 1/4	2.9
TL25252316	2-3/16	1/2 x 1/4	2.8
TL2525214	2-1/4	1/2 x 1/4	2.6
TL25252516	2-5/16	5/8 x 3/16	2.4
TL2525238	2-3/8	5/8 x 3/16	2.6
TL25252716	2-7/16	5/8 x 3/16	2.4
TL2525212	2-1/2	5/8 x 3/16	2.2
TL3020 BUSHINGS			
TL302078	7/8	3/16 x 3/32	6.2
TL302015/16	15/16	1/4 x 1/8	6.1
TL30201	1	1/4 x 1/8	6.1
TL3020118	1-1/8	1/4 x 1/8	5.9
TL30201316	1-3/16	1/4 x 1/8	6
TL3020114	1-1/4	1/4 x 1/8	5.9
TL30201516	1-5/16	5/16 x 5/32	5.8
TL3020138	1-3/8	5/16 x 5/32	6.1
TL30201716	1-7/16	3/8 x 3/16	5.7
TL3020112	1-1/2	3/8 x 3/16	6
TL30201916	1-9/16	3/8 x 3/16	5.5
TL3020158	1-5/8	3/8 x 3/16	5.5
TL302011116	1-11/16	3/8 x 3/16	5.4
TL3020134	1-3/4	3/8 x 3/16	5.3
TL302011316	1-13/16	1/2 x 1/4	5.4
TL3020178	1-7/8	1/2 x 1/4	5.1
TL302011516	1-15/16	1/2 x 1/4	5
TL30202	2	1/2 x 1/4	5.3
TL30202116	2-1/16	1/2 x 1/4	4.8
TL3020218	2-1/8	1/2 x 1/4	5
TL30202316	2-3/16	1/2 x 1/4	4.9

TAPER-LOCK™ BUSHINGS

Bushing Bore & Keyway Information

Inch Bores

Part Number	Bore	Keyseat	Weight
TL3020214	2-1/4	1/2 x 1/4	4.8
TL30202516	2-5/16	5/8 x 5/16	5.4
TL3020238	2-3/8	5/8 x 5/16	4
TL30202716	2-7/16	5/8 x 5/16	4.4
TL3020212	2-1/2	5/8 x 5/16	4.1
TL3020258	2-5/8	5/8 x 5/16	3.8
TL302021116	2-11/16	5/8 x 5/16	3.7
TL3020234	2-3/4	5/8 x 5/16	5
TL302021316	2-13/16	3/4 x 1/4	3.7
TL3020278	2-7/8	3/4 x 1/4	3.8
TL302021516	2-15/16	3/4 x 1/4	3.4
TL30203	3	3/4 x 1/4	3.4
TL3020318	3-1/8	3/4 x 1/4	3.4
TL30203316	3-3/16	3/4 x 1/4	3.1
TL3020314	3-1/4	3/4 x 1/4	3
TL3030 BUSHINGS			
TL303015/16	15/16	1/4 x 1/8	10
TL30301	1	1/4 x 1/8	9.4
TL3030118	1-1/8	1/4 x 1/8	9.4
TL30301316	1-3/16	1/4 x 1/8	9.2
TL3030114	1-1/4	1/4 x 1/8	9
TL30301516	1-5/16	5/16 x 5/32	8.9
TL3030138	1-3/8	5/16 x 5/32	8.8
TL30301716	1-7/16	3/8 x 3/16	8.6
TL3030112	1-1/2	3/8 x 3/16	8.5
TL30301916	1-9/16	3/8 x 3/16	8.4
TL3030158	1-5/8	3/8 x 3/16	8.2
TL303011116	1-11/16	3/8 x 3/16	8
TL3030134	1-3/4	3/8 x 3/16	7.8
TL303011316	1-13/16	1/2 x 1/4	7.6
TL3030178	1-7/8	1/2 x 1/4	7.5
TL303011516	1-15/16	1/2 x 1/4	7.4
TL30302	2	1/2 x 1/4	6.2
TL30302116	2-1/16	1/2 x 1/4	7.2
TL3030218	2-1/8	1/2 x 1/4	7.1
TL30302316	2-3/16	1/2 x 1/4	6.9
TL3030214	2-1/4	1/2 x 1/4	6.7
TL30302516	2-5/16	5/8 x 5/16	6.6
TL3030238	2-3/8	5/8 x 5/16	6.2
TL30302716	2-7/16	5/8 x 5/16	6.2
TL3030212	2-1/2	5/8 x 5/16	6.1
TL3030258	2-5/8	5/8 x 5/16	6.2
TL303021116	2-11/16	5/8 x 5/16	5.9
TL3030234	2-3/4	5/8 x 5/16	6.2
TL303021316	2-13/16	3/4 x 1/4	5.4
TL3030278	2-7/8	3/4 x 1/4	5.3
TL303021516	2-15/16	3/4 x 1/4	5
TL30303	3	3/4 x 1/4	4.9
TL3030318	3-1/8	3/4 x 1/4	4.7
TL30303316	3-3/16	3/4 x 1/4	4.7
TL3030314	3-1/4	3/4 x 1/4	4.7
TL3525 BUSHINGS			
TL35251316	1-3/16	1/4 x 1/8	16
TL3525114	1-1/4	1/4 x 1/8	14.6

Part Number	Bore	Keyseat	Weight
TL35251516	1-5/16	5/16 x 5/32	14.6
TL3525138	1-3/8	5/16 x 5/32	14.3
TL35251716	1-7/16	3/8 x 3/16	14.1
TL3525112	1-1/2	3/8 x 3/16	14
TL35251916	1-9/16	3/8 x 3/16	14
TL3525158	1-5/8	3/8 x 3/16	13.9
TL352511116	1-11/16	3/8 x 3/16	13.9
TL3525134	1-3/4	3/8 x 3/16	13.4
TL352511316	1-13/16	1/2 x 1/4	13.3
TL3525178	1-7/8	1/2 x 1/4	13.2
TL352511516	1-15/16	1/2 x 1/4	13
TL35252	2	1/2 x 1/4	13
TL35252116	2-1/16	1/2 x 1/4	12.9
TL3525218	2-1/8	1/2 x 1/4	12.6
TL35252316	2-3/16	1/2 x 1/4	12.4
TL3525214	2-1/4	1/2 x 1/4	12.3
TL35252516	2-5/16	5/8 x 5/16	11.8
TL3525238	2-3/8	5/8 x 5/16	12
TL35252716	2-7/16	5/8 x 5/16	11.7
TL3525212	2-1/2	5/8 x 5/16	11.5
TL35252916	2-9/16	5/8 x 5/16	11.3
TL3525258	2-5/8	5/8 x 5/16	11.1
TL352521116	2-11/16	5/8 x 5/16	10.7
TL3525234	2-3/4	5/8 x 5/16	10.4
TL352521316	2-13/16	3/4 x 3/8	10.3
TL3525278	2-7/8	3/4 x 3/8	10.1
TL352521516	2-15/16	3/4 x 3/8	10.5
TL35253	3	3/4 x 3/8	9.5
TL35253116	3-1/16	3/4 x 3/8	9.4
TL3525318	3-1/8	3/4 x 3/8	9.3
TL35253316	3-3/16	3/4 x 3/8	8.6
TL3525314	3-1/4	3/4 x 3/8	8.8
TL35253516	3/5/16	7/8 x 1/4	8.7
TL3525338	3/3/8	7/8 x 1/4	8.5
TL35253716	3-7/16	7/8 x 1/4	8.2
TL3525312	3-1/2	7/8 x 1/4	8
TL35253916	3-9/16	7/8 x 1/4	8
TL3525358	3-5/8	7/8 x 1/4	7.9
TL352531316	3-13/16	7/8 x 1/4	7.9
TL352531116	3-11/16	7/8 x 1/4	7.9
TL3525334	3-3/4	7/8 x 1/4	7.9
TL3525378	3-7/8	1 x 1/4	7.9
TL352531516	3-15/16	1 x 1/4	7.9
TL3535 BUSHINGS			
TL35351316	1-3/16	1/4 x 1/8	9.3
TL3535114	1-1/4	1/4 x 1/8	14.9
TL3535138	1-3/8	5/16 x 5/32	15.4
TL35351716	1-7/16	3/8 x 3/16	15.4
TL3535112	1-1/2	3/8 x 3/16	14.6
TL3535158	1-5/8	3/8 x 3/16	14.2
TL353511116	1-11/16	3/8 x 3/16	14.1
TL3535134	1-3/4	3/8 x 3/16	14.1
TL3535178	1-7/8	1/2 x 1/4	13.6
TL353511516	1-15/16	1/2 x 1/4	13.4



Bushing Bore & Keyway Information

Inch Bores

Part Number	Bore	Keyseat	Weight
TL35352	2	1/2 x 1/4	13.3
TL3535218	2-1/8	1/2 x 1/4	12.8
TL35352316	2-3/16	1/2 x 1/4	12.8
TL3535214	2-1/4	1/2 x 1/4	12.4
TL35352516	2-5/16	5/8 x 5/16	12.4
TL3535238	2-3/8	5/8 x 5/16	12
TL35352716	2-7/16	5/8 x 5/16	12
TL3535212	2-1/2	5/8 x 5/16	11.7
TL3535258	2-5/8	5/8 x 5/16	11.1
TL353521116	2-11/16	5/8 x 5/16	10.9
TL3535234	2-3/4	5/8 x 5/16	10.7
TL3535278	2-7/8	3/4 x 3/8	10
TL353521516	2-15/16	3/4 x 3/8	10
TL35353	3	3/4 x 3/8	9.7
TL3535318	3-1/8	3/4 x 3/8	9.2
TL35353316	3-3/16	3/4 x 3/8	8.8
TL3535314	3-1/4	3/4 x 3/8	8.6
TL35353516	3-5/16	7/8 x 1/4	9
TL3535338	3-3/8	7/8 x 1/4	8.6
TL35353716	3-7/16	7/8 x 1/4	8
TL3535312	3-1/2	7/8 x 1/4	8.1
TL3535358	35/8	7/8 x 1/4	7.3
TL353531116	3-11/16	7/8 x 1/4	7
TL3535334	3-3/4	7/8 x 1/4	6.7
TL3535378	3-7/8	1 x 1/4	6
TL353531516	3-15/16	1 x 1/4	5.8
TL4030 BUSHINGS			
TL40301716	1-7/16	3/8 x 3/16	24
TL4030112	1-1/2	3/8 x 3/16	22
TL40301916	1-9/16	3/8 x 3/16	21.9
TL4030158	1-5/8	3/8 x 3/16	21.8
TL403011116	1-11/16	3/8 x 3/16	21.5
TL4030134	1-3/4	3/8 x 3/16	21.2
TL403011316	1-13/16	1/2 x 1/4	21
TL4030178	1-7/8	1/2 x 1/4	20.9
TL403011516	1-15/16	1/2 x 1/4	20.7
TL40302	2	1/2 x 1/4	20.6
TL40302116	2-1/16	1/2 x 1/4	20.6
TL4030218	2-1/8	1/2 x 1/4	20.7
TL40302316	2-3/16	1/2 x 1/4	20.4
TL4030214	2-1/4	1/2 x 1/4	20.1
TL40302516	2-5/16	5/8 x 5/16	20
TL4030238	2-3/8	5/8 x 5/16	19.5
TL40302716	2-7/16	5/8 x 5/16	19.3
TL4030212	2-1/2	5/8 x 5/16	19.2
TL40302916	2-9/16	5/8 x 5/16	19.1
TL4030258	2-5/8	5/8 x 5/16	19
TL403021116	2-11/16	5/8 x 5/16	18.4
TL4030234	2-3/4	5/8 x 5/16	17.7
TL403021316	2-13/16	3/4 x 3/8	17.5
TL4030278	2-7/8	3/4 x 3/8	17.2
TL403021516	2-15/16	3/4 x 3/8	17.2
TL40303	3	3/4 x 3/8	17
TL40303116	3-1/16	3/4 x 3/8	16.8
TL4030318	3-1/8	3/4 x 3/8	16.5

Part Number	Bore	Keyseat	Weight
TL40303316	3-3/16	3/4 x 3/8	15.9
TL4030314	3-1/4	3/4 x 3/8	15.4
TL40303516	3-5/16	3/4 x 3/8	14.9
TL4030338	3-3/8	7/8 x 7/16	14.6
TL40303716	3-7/16	7/8 x 7/16	14.1
TL4030312	3-1/2	7/8 x 7/16	13.7
TL40303916	3-9/16	7/8 x 7/16	13.4
TL4030358	3-5/8	7/8 x 7/16	13.1
TL403031116	3-11/16	7/8 x 1/4	13
TL4030334	3-3/4	7/8 x 1/4	12.7
TL4030378	3-7/8	1 x 1/4	12.9
TL403031516	3-15/16	1 x 1/4	12.6
TL40304	4	1 x 1/4	13
TL4030418	4-1/8	1 x 1/4	12.8
TL40304316	4-3/16	1 x 1/4	12.6
TL4030414	4-1/4	1 x 1/4	12.4
TL4030438	4-3/8	1 x 1/4	12.2
TL40304716	4-7/16	1 x 1/4	12
TL4040 BUSHINGS			
TL40401716	1-7/16	3/8 x 3/16	22.6
TL4040112	1-1/2	3/8 x 3/16	22.9
TL4040158	1-5/8	3/8 x 3/16	22.1
TL404011116	1-11/16	3/8 x 3/16	22.9
TL4040134	1-3/4	3/8 x 3/16	21.8
TL4040178	1-7/8	1/2 x 1/4	21.4
TL404011516	1-15/16	1/2 x 1/4	22.9
TL40402	2	1/2 x 1/4	20.7
TL4040218	2-1/8	1/2 x 1/4	20.6
TL40402316	2-3/16	1/2 x 1/4	20.2
TL4040214	2-1/4	1/2 x 1/4	20.2
TL4040238	2-3/8	5/8 x 5/16	19.6
TL40402716	2-7/16	5/8 x 5/16	19.3
TL4040212	2-1/2	5/8 x 5/16	15
TL4040258	2-5/8	5/8 x 5/16	18.7
TL404021116	2-11/16	5/8 x 5/16	18.3
TL4040234	2-3/4	5/8 x 5/16	18.2
TL4040278	2-7/8	3/4 x 3/8	15
TL404021516	2-15/16	3/4 x 3/8	15
TL40403	3	3/4 x 3/8	16.8
TL4040318	3-1/8	3/4 x 3/8	16.2
TL40403316	3-3/16	3/4 x 3/8	15.8
TL4040314	3-1/4	3/4 x 3/8	15.5
TL4040338	3-3/8	7/8 x 7/16	17
TL40403716	3-7/16	7/8 x 7/16	14.4
TL4040312	3-1/2	7/8 x 7/16	17
TL4040358	3-5/8	7/8 x 7/16	12.5
TL404031116	3-11/16	7/8 x 1/4	13.5
TL4040334	3-3/4	7/8 x 1/4	13.5
TL4040378	3-7/8	1 x 1/4	15
TL404031516	3-15/16	1 x 1/4	12.5
TL40404	4	1 x 1/4	12.1
TL4040418	4-1/8	1 x 1/4	11.2
TL40404316	4-3/16	1 x 1/4	10.7
TL4040414	4-1/4	1 x 1/4	10.3
TL4040438	4-3/8	1 x 1/4	9.5

TAPER-LOCK™ BUSHINGS

Bore and Keyseat Information

Inch Bores

Part Number	Bore	Keyseat	Weight
TL40404716	4-7/16	1 x 1/4	8.9
TL4535 BUSHINGS			
TL453511516	1-15/16	1/2 x 1/4	31
TL45352	2	1/2 x 1/4	29.7
TL45352116	2-1/16	1/2 x 1/4	29.5
TL4535218	2-1/8	1/2 x 1/4	29.3
TL45352316	2-3/16	1/2 x 1/4	29
TL4535214	2-1/4	1/2 x 1/4	28.8
TL45352516	2-5/16	5/8 x 5/16	28.6
TL4535238	2-3/8	5/8 x 5/16	28.4
TL45352716	2-7/16	5/8 x 5/16	28
TL4535212	2-1/2	5/8 x 5/16	26.7
TL45352916	2-9/16	5/8 x 5/16	26.3
TL4535258	2-5/8	5/8 x 5/16	25.9
TL453521116	2-11/16	5/8 x 5/16	25.4
TL4535234	2-3/4	5/8 x 5/16	25
TL453521316	2-13/16	3/4 x 3/8	24.9
TL4535278	2-7/8	3/4 x 3/8	24.8
TL453521516	2-15/16	3/4 x 3/8	24.1
TL45353	3	3/4 x 3/8	24.2
TL45353116	3-1/16	3/4 x 3/8	24.2
TL4535318	3-1/8	3/4 x 3/8	24.1
TL45353316	3-3/16	3/4 x 3/8	23.8
TL4535314	3-1/4	3/4 x 3/8	23.1
TL45353516	3-5/16	7/8 x 7/16	22.7
TL4535338	3-3/8	7/8 x 7/16	22.4
TL45353716	3-7/16	7/8 x 7/16	21.5
TL4535312	3-1/2	7/8 x 7/16	21.3
TL45353916	3-9/16	7/8 x 7/16	21.2
TL4535358	3-5/8	7/8 x 7/16	21
TL453531316	3-11/16	7/8 x 7/16	20.7
TL453531116	3-11/16	7/8 x 7/16	20.3
TL4535334	3-3/4	7/8 x 7/16	19.9
TL4535378	3-7/8	1 x 1/2	19.3
TL453531516	3-15/16	1 x 1/2	18.9
TL45354	4	1 x 1/2	18.7
TL4535418	4-1/8	1 x 1/2	18.6
TL45354316	4-3/16	1 x 1/2	18.5
TL4535414	4-1/4	1 x 1/2	17.8
TL4535438	4-3/8	1 x 1/4	16.8
TL45354716	4-7/16	1 x 1/4	15.4
TL4535412	4-1/2	1 x 1/4	15.3
TL4535434	4-3/4	11/4 x 1/4	15.2
TL4535478	4-7/8	11/4 x 1/4	15.1
TL453541516	4-15/16	11/4 x 1/4	14.9
TL4545 BUSHINGS			
TL454511516	1-15/16	1/2 x 1/4	29.9
TL45452	2	1/2 x 1/4	29.8
TL45452316	2-3/16	1/2 x 1/4	29.1
TL4545238	2-3/8	5/8 x 5/16	27.2
TL45452716	2-7/16	5/8 x 5/16	27.1
TL4545258	2-5/8	5/8 x 5/16	26.7
TL4545234	2-3/4	5/8 x 5/16	26.5
TL4545278	2-7/8	3/4 x 3/8	20.3
TL454521516	2-15/16	3/4 x 3/8	25.3

Part Number	Bore	Keyseat	Weight
TL45453	3	3/4 x 3/8	20
TL4545318	3-1/8	3/4 x 3/8	19.7
TL45453316	3-3/16	3/4 x 3/8	19.6
TL4545314	3-1/4	3/4 x 3/8	19.4
TL4545338	3-3/8	7/8 x 7/16	20
TL45453716	3-7/16	7/8 x 7/16	19.9
TL4545312	3-1/2	7/8 x 7/16	19.7
TL4545358	3-5/8	7/8 x 7/16	20.2
TL4545334	3-3/4	7/8 x 7/16	19
TL4545378	3-7/8	1 x 1/2	23.8
TL454531516	3-15/16	1 x 1/2	20
TL45454	4	1 x 1/2	23.4
TL4545418	4-1/8	1 x 1/2	23.1
TL45454316	4-3/16	1 x 1/2	22.9
TL4545414	4-1/4	1 x 1/2	22.7
TL4545438	4-3/8	1 x 1/4	22.3
TL45454716	4-7/16	1 x 1/4	22.1
TL4545412	4-1/2	1 x 1/4	21.9
TL4545434	4-3/4	1-1/4 x 1/4	21
TL4545478	4-7/8	1-1/4 x 1/4	20.6
TL454541516	4-15/16	1-1/4 x 1/4	20.4
TL5040 BUSHINGS			
TL50402716	2-7/16	5/8 x 5/16	39.5
TL5040212	2-1/2	5/8 x 5/16	38.4
TL50402916	2-9/16	5/8 x 5/16	37.8
TL5040258	2-5/8	5/8 x 5/16	37.1
TL504021116	2-11/16	5/8 x 5/16	36.9
TL5040234	2-3/4	5/8 x 5/16	36.6
TL504021316	2-13/16	3/4 x 3/8	36.5
TL5040278	2-7/8	3/4 x 3/8	36.4
TL504021516	2-15/16	3/4 x 3/8	36.2
TL50403	3	3/4 x 3/8	35.6
TL50403116	3-1/16	3/4 x 3/8	35.1
TL5040318	3-1/8	3/4 x 3/8	34.8
TL50403316	3-3/16	3/4 x 3/8	33.9
TL5040314	3-1/4	3/4 x 3/8	33.2
TL50403516	3-5/16	7/8 x 7/16	33
TL5040338	3-3/8	7/8 x 7/16	32.7
TL50403716	3-7/16	7/8 x 7/16	32
TL5040312	3-1/2	7/8 x 7/16	31.7
TL50403916	3-9/16	7/8 x 7/16	31.4
TL5040358	3-5/8	7/8 x 7/16	31.1
TL504031316	3-13/16	7/8 x 7/16	30.8
TL504031116	3-11/16	7/8 x 7/16	30.4
TL5040334	3-3/4	7/8 x 7/16	29.7
TL5040378	3-7/8	1 x 1/2	39
TL504031516	3-15/16	1 x 1/2	28.7
TL50404	4	1 x 1/2	27.8
TL5040418	4-1/8	1 x 1/2	27.5
TL50404316	4-3/16	1 x 1/2	27.2
TL5040414	4-1/4	1 x 1/2	27
TL5040438	4-3/8	1 x 1/2	26
TL50404716	4-7/16	1 x 1/2	25.1
TL5040412	4-1/2	1 x 1/2	23.6
TL5040434	4-3/4	1-1/4 x 1/4	22.9



Bushing Bore & Keyway Information

Inch Bores

Part Number	Bore	Keyseat	Weight
TL5040478	4-7/8	1-1/4 x 1/4	22.2
TL504041516	4-15/16	1-1/4 x 1/4	20.6
TL50405	5	1-1/4 x 1/4	20.5
TL5050 BUSHINGS			
TL50502716	2-7/16	5/8 x 5/16	39
TL505021116	2-11/16	5/8 x 5/16	37.4
TL505021516	2-15/16	3/4 x 3/8	36
TL5050338	3-3/8	7/8 x 7/16	33
TL50503716	3-7/16	7/8 x 7/16	32.6
TL5050358	3-5/8	7/8 x 7/16	31.2
TL5050378	3-7/8	1 x 1/2	28
TL505031516	3-15/16	1 x 1/2	28.6
TL50504	4	1 x 1/2	22.2
TL5050414	4-1/4	1 x 1/2	26
TL5050438	4-3/8	1 x 1/2	25
TL50504716	4-7/16	1 x 1/2	26
TL5050412	4-1/2	1 x 1/2	26
TL5050478	4-7/8	1-1/4 x 7/16	22.3
TL505041516	4-15/16	1-1/4 x 7/16	21.4
TL50505	5	1-1/4 x 7/16	36
TL6050 BUSHINGS			
TL60503	3	3/4 x 3/8	65
TL6050314	3-1/4	3/4 x 3/8	65
TL60503716	3-7/16	7/8 x 7/16	65
TL60504	4	1 x 1/2	65
TL60504716	4-7/16	1 x 1/2	64.2
TL605041516	4-15/16	1-1/4 x 5/8	52
TL60505716	5-7/16	1-1/4 x 5/8	46
TL605051516	5-15/16	1-1/2 x 3/4	47.2
TL60506	6	1-1/2 x 3/4	52
TL7060 BUSHINGS			
TL70603	3	3/4 x 3/8	95
TL7060314	3-1/4	3/4 x 3/8	95
TL70603716	3-7/16	7/8 x 7/16	95
TL706041516	4-15/16	1-1/4 x 5/8	91.9
TL70605716	5-7/16	1-1/4 x 5/8	84.5
TL706051516	5-15/16	1-1/2 x 3/4	78.2
TL70606	6	1-1/2 x 3/4	76.6
TL70606716	6-7/16	1-1/2 x 3/4	69
TL7060612	6-1/2	1-1/2 x 3/4	68.6
TL706061516	6-15/16	1-3/4 x 7/8	61
TL70607	7	1-3/4 x 7/8	60.6

TAPER-LOCK™ BUSHINGS

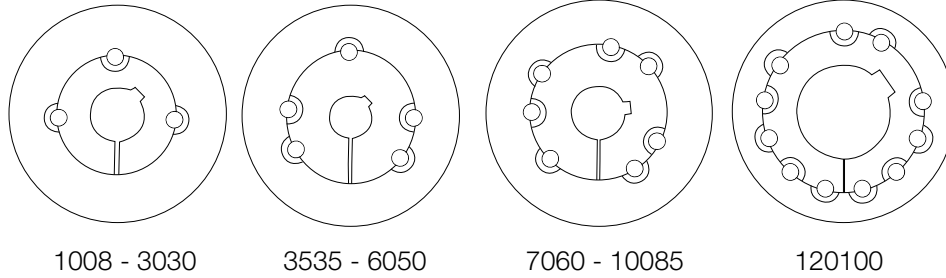
Bushing Bore & Keyway Information

Metric Bores


Part Number	Bore	Keyseat	Weight
TL1008 BUSHINGS			
TL100814MM	14MM	5 X 5	0.3
TL100816MM	16MM	5 X 5	0.2
TL100818MM	18MM	6 X 6	0.2
TL100819MM	19MM	6 X 6	0.2
TL100820MM	20MM	6 X 6	0.2
TL100822MM	22MM	6 X 6	0.2
TL100824MM	24MM	8 X 7	0.2
TL1108 BUSHINGS			
TL110816MM	16MM	5 X 5	0.3
TL110818MM	18MM	6 X 6	0.3
TL110819MM	19MM	6 X 6	0.3
TL110820MM	20MM	6 X 6	0.3
TL110822MM	22MM	6 X 6	0.2
TL110824MM	24MM	8 X 7	0.3
TL110825MM	25MM	8 X 7	0.2
TL1210 BUSHINGS			
TL121014MM	14MM	5 X 5	0.6
TL121016MM	16MM	6 X 6	0.6
TL121018MM	18MM	6 X 6	0.6
TL121019MM	19MM	6 X 6	0.5
TL121020MM	20MM	6 X 6	0.5
TL121024MM	24MM	8 X 7	0.5
TL121025MM	25MM	8 X 7	0.6
TL121028MM	28MM	8 X 7	0.4
TL121030MM	30MM	8 X 7	0.4
TL1610 BUSHINGS			
TL161019MM	19MM	6 X 6	0.8
TL161020MM	20MM	6 X 6	0.7
TL161022MM	22MM	6 X 6	0.7
TL161024MM	24MM	8 X 7	0.8
TL161025MM	25MM	8 X 7	0.7
TL161028MM	28MM	8 X 7	0.7
TL161030MM	30MM	8 X 7	0.7
TL161032MM	32MM	10 X 8	0.6
TL161035MM	35MM	10 X 8	0.6
TL161038MM	38MM	10 X 8	0.5
TL161040MM	40MM	12 X 8	0.4
TL2012 BUSHINGS			
TL201214MM	14MM	5 X 5	1.7
TL201216MM	16MM	5 X 5	1.7
TL201218MM	18MM	6 X 6	1.6
TL201219MM	19MM	6 X 6	1.6
TL201220MM	20MM	6 X 6	1.6
TL201222MM	22MM	6 X 6	1.6
TL201224MM	24MM	8 X 7	1.5
TL201225MM	25MM	8 X 7	1.5
TL201228MM	28MM	8 X 7	1.5
TL201230MM	30MM	8 X 7	1.4
TL201232MM	32MM	10 X 8	1.5
TL201235MM	35MM	10 X 8	1.3
TL201238MM	38MM	10 X 8	1.3
TL201240MM	40MM	12 X 8	1.2
TL201242MM	42MM	12 X 8	1.5
TL201245MM	45MM	14 X 9	1.2

Part Number	Bore	Keyseat	Weight
TL2517 BUSHINGS			
TL251714MM	14MM	5 X 5	3.6
TL251716MM	16MM	5 X 5	3.6
TL251718MM	18MM	6 X 6	3.5
TL251720MM	20MM	6 X 6	3.4
TL251722MM	22MM	6 X 6	3.3
TL251724MM	24MM	8 X 7	3.3
TL251725MM	25MM	8 X 7	3.2
TL251728MM	28MM	8 X 7	3.1
TL251730MM	30MM	8 X 7	3.1
TL251732MM	32MM	10 X 8	3.0
TL251735MM	35MM	10 X 8	2.9
TL251738MM	38MM	10 X 8	2.9
TL251740MM	40MM	12 X 8	2.7
TL251742MM	42MM	12 X 8	2.0
TL251745MM	45MM	14 X 9	2.5
TL251748MM	48MM	14 X 9	2.0
TL251750MM	50MM	14 X 9	2.3
TL251755MM	55MM	16 X 10	2.0
TL251760MM	60MM	18 X 11	1.6
TL3020 BUSHINGS			
TL302024MM	24MM	8 X 7	6.1
TL302025MM	25MM	8 X 7	6.3
TL302028MM	28MM	8 X 7	6.0
TL302040MM	40MM	12 X 8	5.5
TL302045MM	45MM	14 X 9	5.3
TL302048MM	48MM	14 X 9	5.1
TL302050MM	50MM	14 X 9	5.0
TL302055MM	55MM	16 X 10	4.7
TL302060MM	60MM	18 X 11	4.4
TL302065MM	65MM	18 X 11	4.0

Taper-Lock Bushing Installation & Removal




To Install Taper-Lock™ Bushings:

1. Clean shaft, bore and outside of bushing, and bore of hub (taking bushings from hub if already assembled). Remove any oil, grease and dirt.
2. Place hub onto shaft. Slip bushing onto shaft and into hub. Oil threads and points of setscrews or threads and under heads of capscrews. DO NOT lubricate the hub bore or the outside of the bushing. Place screws loosely in holes that are threaded on hub side (shown as  on diagram above).
3. Locate assembly in desired position and tighten screws slightly to seat bushing in hub.
4. Tighten screws alternately and evenly to the fastener torque. Do not overtorque. Using a hammer and drift, hammer against large end of bushing. Hammer first beside the screw farthest from the bushing split and then hammer on the bushing on the opposite side of the screw. Avoid hammering close to the OD of the bushing to prevent damage.

Working towards the split, hammer on the bushing on each side of the setscrews. Then hammer on each side of the bushing split. Make sure that the surfaces on both sides of the split are even. Screws can now be tightened to fastener torque. Repeat sequence, hammering and retightening until the specified fastener torque no longer turns the screws after hammering.

To Remove

1. Remove all screws. Oil threads and points of set screws or threads and under heads of cap screws.
2. Insert screws into holes that are threaded on the bushing side (shown as  on diagram). In sizes where washers are found under the screw heads, be sure to use the washers. Note that one screw in each hub is left over and is not used in the loosening operation.
3. Tighten screws alternately until bushing is loosened in hub. If bushing does not loosen, tap on face of hub.

WARNING: Use NO lubricants on the bushing body or hub bore

Bushing Installation

Bushing Size	Bolts		Fastener Torque	
	Qty.	Size	lb-ft	lb-in
1008-1108	2	1/4-20 Setscrew	4.6	55
1210-1215-1310-1610-1615	2	3/8-16 Setscrew	15	175
2012	2	7/16-14 Setscrew	23	280
2517-2525	2	1/2-13 Setscrew	36	430
3020-3030	2	5/8-11 Setscrew	67	800
3535	3	1/2-13 Setscrew	83	1000
4040	3	5/8-11 Capscrew	142	1700
4545	3	3/4-10 Capscrew	204	2450
5050	3	7/8-9 Capscrew	258	3100
6050	3	1-1/4-7 Capscrew	650	7820
7060-8065	4	1-1/4-7 Capscrew	650	7820
10085	4	1-1/2-6 Capscrew	1140	13680
120100	6	1-1/2-6 Capscrew	1140	13680

Caution: Excessive bolt torque can cause hub and/or bushing breakage.

Note: To insure proper bushing/hub performance, full bushing contact on the shaft is recommended.

The Power Of One, The Strength Of Many.

OTHER PRODUCT SOLUTIONS FROM
ALTRA INDUSTRIAL MOTION

WWW.ALTRAMOTION.COM

Our comprehensive product offerings include various types of clutches and brakes, overrunning clutches, engineered bearing assemblies, gearing and gear motors along with linear products, belted drives, couplings and limit switches. With thousands of product solutions available, Altra provides true single source convenience while meeting specific customer requirements. Many major OEMs and end users prefer Altra products as their No. 1 choice for performance and reliability.



ELECTRIC CLUTCHES AND BRAKES

Inertia Dynamics
Matrix
Stromag
Warner Electric



HEAVY DUTY CLUTCHES AND BRAKES

Industrial Clutch
Stromag
Svendborg Brakes
Twiflex
Wichita Clutch



OVERRUNNING CLUTCHES

Formsprag Clutch
Marland Clutch
Stieber



ENGINEERED COUPLINGS AND UNIVERSAL JOINTS

Ameridrives
Bibby Turboflex
Guardian Couplings
Huco
Lamiflex Couplings
Stromag
TB Wood's



GEAR DRIVES

Bauer Gear Motor
Boston Gear
Delroyd Worm Gear
Nuttall Gear



GEAR MOTORS

Bauer Gear Motor



POWER TRANSMISSION COMPONENTS

LINEAR ACTUATORS AND CONTROLS

Warner Linear



ENGINEERED BEARING ASSEMBLIES

Kilian



AIR MOTORS

Huco



BELTED DRIVES AND SHEAVES

TB Wood's



GEARED CAM LIMIT SWITCHES

Stromag

TB Wood's Facilities

North America

USA

440 North Fifth Avenue
Chambersburg, PA 17201 - USA
888-829-6637 * 717-264-7161
Belted Drives and Elastomeric Couplings

Customer Service

1-888-829-6637 (Press #5)

For Application Support

1-888-829-6637 (Press #7)

2000 Clovis Barker Road
San Marcos, TX 78666 - USA
1-888-449-9439
General Purpose Disc Couplings

Customer Service

1-888-449-9439

4970 Joule St
Reno, NV 89502 - USA
775-857-1800

Canada

9779 45 Ave NW
Edmonton, AB T6E 5V8 - Canada
+1 780-439-7979

6305 Danville Road
Mississauga, ON L5T 2H7 - Canada
1-800-829-6631

1073 Rue Bégin
Saint-Laurent, QC H4R 1V8 - Canada
+1 514-332-4812

Mexico

Comisión Federal de Electricidad 850,
Industrial San Luis,
San Luis, S.L.P., 78395 - Mexico
+52 444 137 1500

Europe

Merchant Drive, Hertford
Hertfordshire SG13 7BL - England
+44(0)1992 501900
Elastomeric Couplings

The Brands of Altra Industrial Motion

Couplings

Ameridrives
www.ameridrives.com

Bibby Turbobox
www.bibbyturbobox.com

Guardian Couplings
www.guardiancouplings.com

Huco
www.huco.com

Lamiflex Couplings
www.lamiflexcouplings.com

Stromag
www.stromag.com

TB Wood's
www.tbwoods.com

Geared Cam Limit Switches

Stromag
www.stromag.com

Electric Clutches & Brakes

Inertia Dynamics
www.idicb.com

Matrix
www.matrix-international.com

Stromag
www.stromag.com

Warner Electric
www.warnerelectric.com

Linear Products

Warner Linear
www.warnerlinear.com

Engineered Bearing Assemblies

Kilian
www.kilianbearings.com

Heavy Duty Clutches & Brakes

Industrial Clutch
www.indclutch.com

Twiflex
www.twiflex.com

Stromag
www.stromag.com

Svendborg Brakes
www.svendborg-brakes.com

Wichita Clutch
www.wichitaclutch.com

Belted Drives

TB Wood's
www.tbwoods.com

Gearing

Bauer Gear Motor
www.bauergears.com

Boston Gear
www.bostongear.com

Delroyd Worm Gear
www.delroyd.com

Nuttall Gear
www.nuttallgear.com

Overrunning Clutches

Formsprag Clutch
www.formsprag.com

Marland Clutch
www.marland.com

Stieber
www.stieberclutch.com

Neither the accuracy nor completeness of the information contained in this publication is guaranteed by the company and may be subject to change in its sole discretion. The operating and performance characteristics of these products may vary depending on the application, installation, operating conditions and environmental factors. The company's terms and conditions of sale can be viewed at <http://www.altramotion.com/terms-and-conditions/sales-terms-and-conditions>. These terms and conditions apply to any person who may buy, acquire or use a product referred to herein, including any person who buys from a licensed distributor of these branded products.

©2018 by TB Wood's LLC. All rights reserved. All trademarks in this publication are the sole and exclusive property of TB Wood's LLC or one of its affiliated companies.